



# ASSEMBLY INSTRUCTIONS

## MODEL : ALASKA DROPSIDE DINING TABLE

### IMPORTANT NOTE :

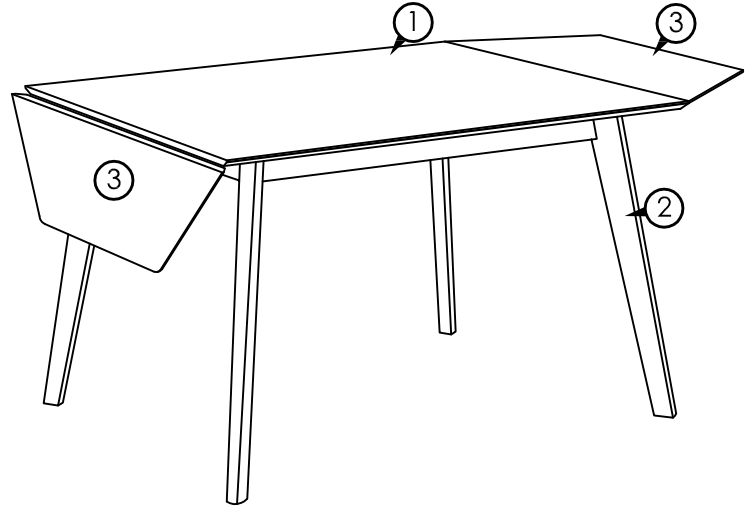
- \* PLACE ALL WOODEN PARTS ON A CLEAN AND SMOOTH SURFACE SUCH AS A RUG OR CARPET TO AVOID THE PARTS FROM BEING SCRATCHED.
- \* BEFORE YOU BEGIN, KINDLY FOLLOW THE ASSEMBLY INSTRUCTIONS STEP BY STEP.

### HARDWARE LIST

HARDWARE LIST		
A	JCBB M8 x 70mm + S/W 5/16" + F/W 5/16" x 22mm	8PCS
		
B	ALLEN KEY M5	1PC
		

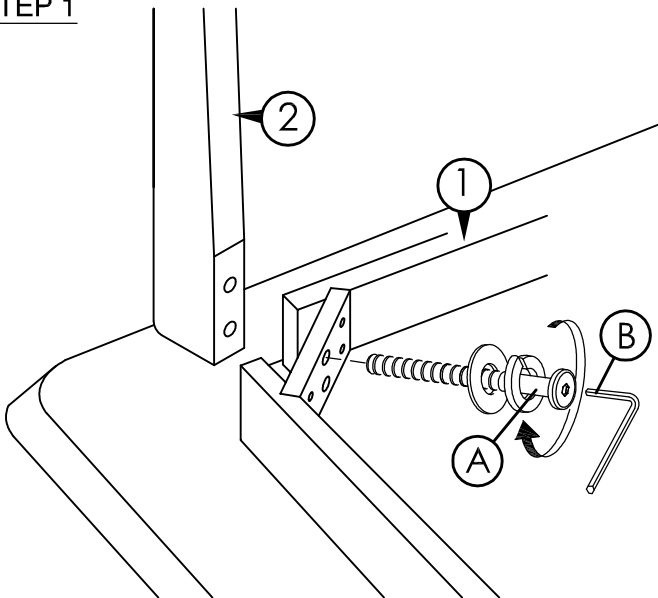
### PART LIST

1	TABLE TOP	1PC
2	TABLE LEG	4PCS
3	DROP LEAF	2PCS



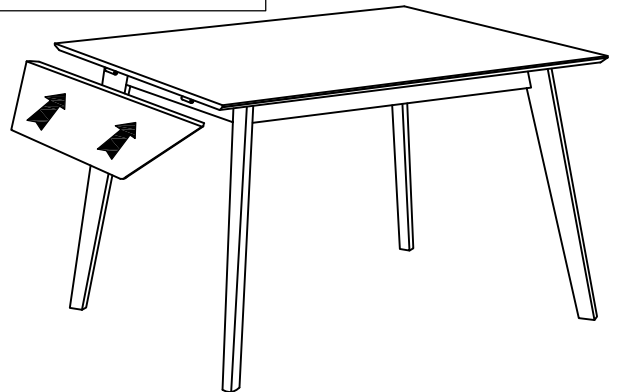
COMPLETED TABLE ASSEMBLY.

### STEP 1

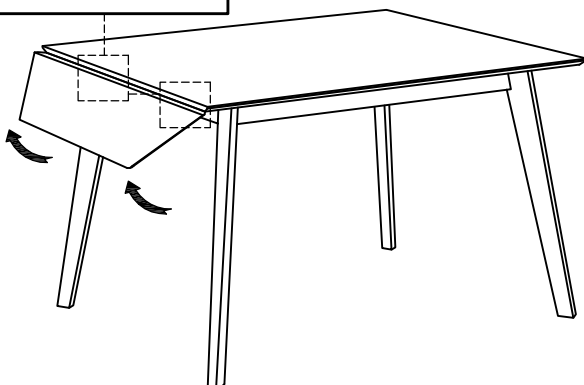
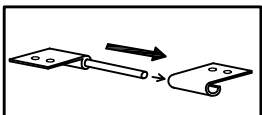


### STEP 2

DROP LEAF POSITION BEFORE ASSEMBLY.



### STEP 3



### STEP 4

